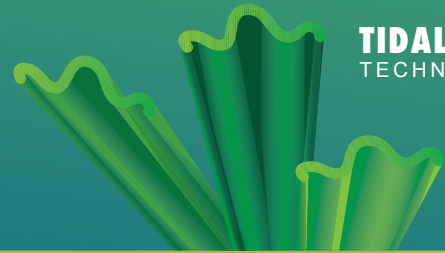


# RIVIERA TURF™



MADE IN THE U.S.A.



**TIDAL WAVE  
TECHNOLOGY**

## BRISTOL

### FEATURED BENEFITS

- Bristol was designed to replicate the lush beauty of natural grass, specifically for landscape applications.
- The Tidal Wave yarn system has a combination of field and apple green blades combined with a curly brown and olive thatch layer.
- The 2 1/4" pile height highlights all the beauty of a lush thick lawn that will be the envy of the neighborhood.
- Tidal Wave shaped blades have our Luster Guard™ technology that diffuses the sun's rays, resulting in extremely low-luster & a natural appearance.

RECOMMENDED USE: LIGHT TO MODERATE  
COLORS: FIELD/ APPLE

### YARN

TYPE: MONOFILAMENT  
COMPOSITION/STRUCTURE: POLYETHYLENE

### TURF

PILE/FACE WEIGHT: 80 OZ.  
MACHINE GAUGE: 1/2 IN.  
PILE HEIGHT: 2 1/4 IN.

### BACKING

PRIMARY BACKING: WOVEN POLYPROPYLENE  
SECONDARY BACKING: POLYURETHANE  
COMPOSITION/STRUCTURE: 2 LAYERS 13 PIC BLACK  
WEIGHT: 6 OZ. PER SQ. YD.

### FINISH COATING

COATING: POLYURETHANE 20 OZ. PER SQ. YD.  
TOTAL PRODUCT WEIGHT: 106 OZ.

### PARTICULATE INFILL

TYPE: QUALITY INFILL  
WEIGHT: 1-3 LBS. PER SQ. FT.  
HEIGHT: APPROXIMATELY 1/2 IN. - 3/4 IN.

### MANUFACTURED ROLLS

WIDTH: 15 FT.  
APPROXIMATELY LENGTH: 85 - 100 FT.  
DRAINAGE RATE: > 30 IN. PER HOUR

### MAIN APPLICATION:



RESIDENTIAL



PETS



COMMERCIAL



FRINGE

**LUSTER GUARD™  
TECHNOLOGY**



Luster Guard™ diffuses the sun rays which eliminate reflection and shine

WWW.RIVIERATURF.COM